

Population Profile of Medicaid Membership Adult QAP – 9-14-21



Connecticut BHP

Supporting Health and Recovery



Agenda

1 Orientation to Pop Profile

2 Planned Enhancements (Nov. 2021)

3 Adult Population (vs. total)

4 BH Service Utilizers (vs. Adult)

5 Race and Ethnicity

6 Chronic MH Conditions

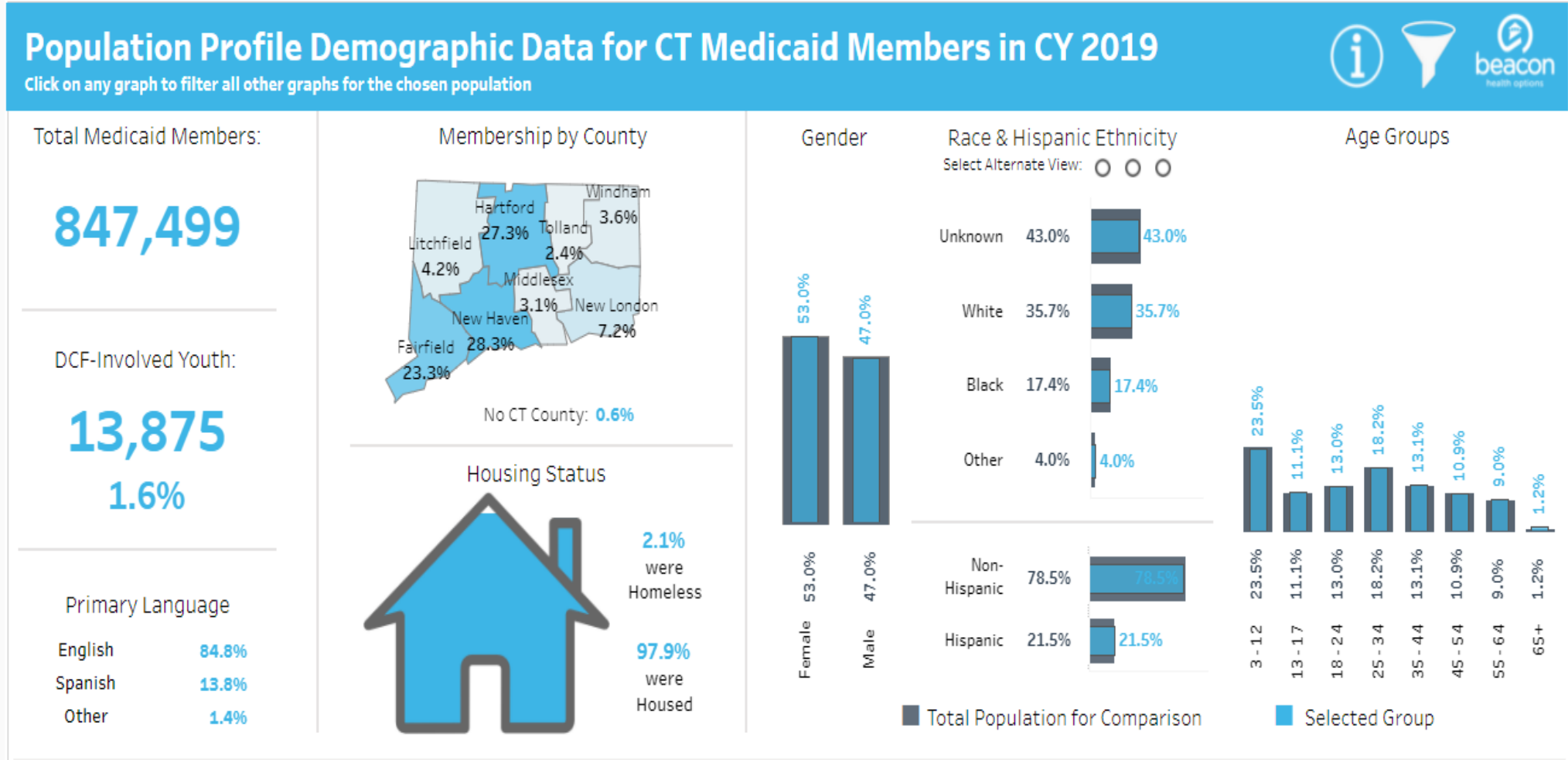
7 Chronic Medical Conditions

8 Chronic SUD Conditions

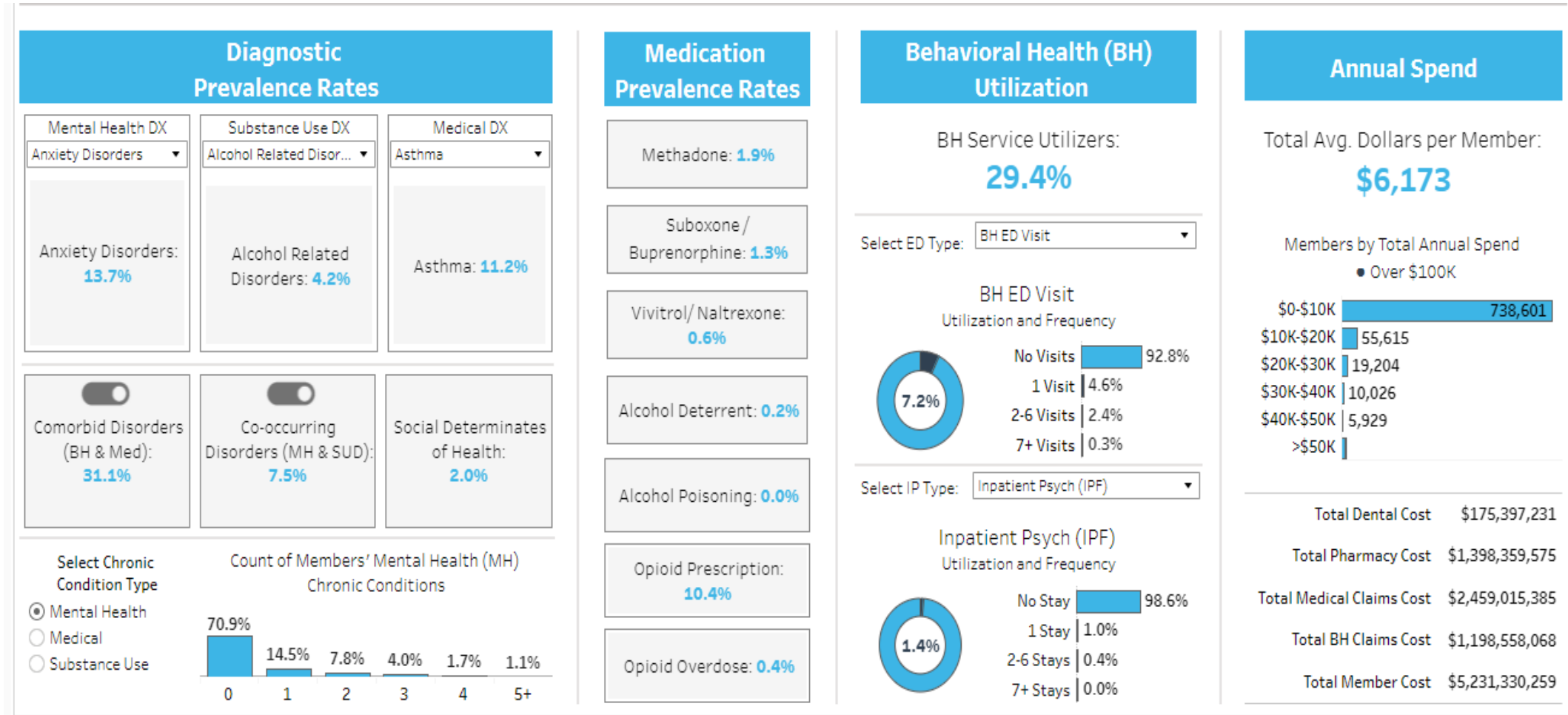
9 Methadone Population

10 Live Data Exploration

Total Population Profile



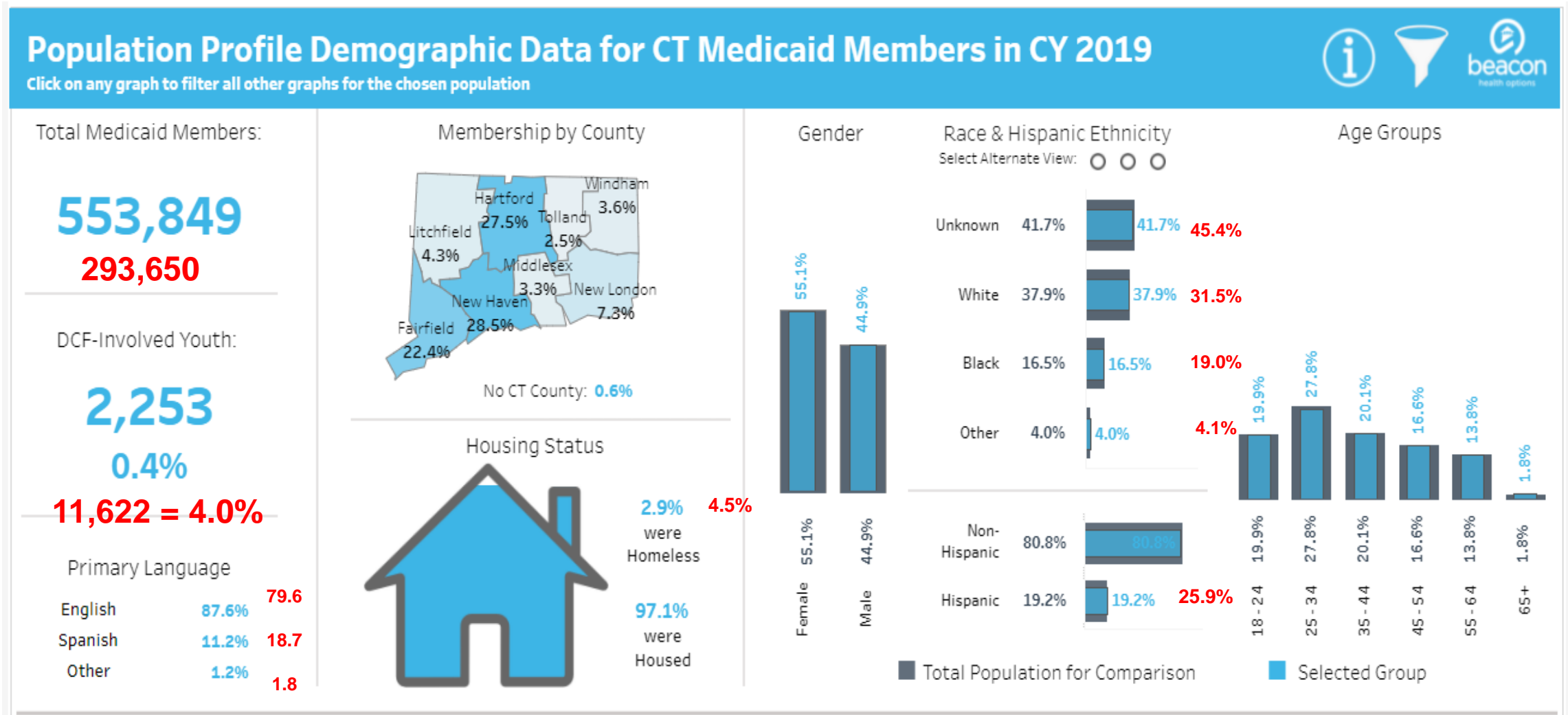
Total Population Profile



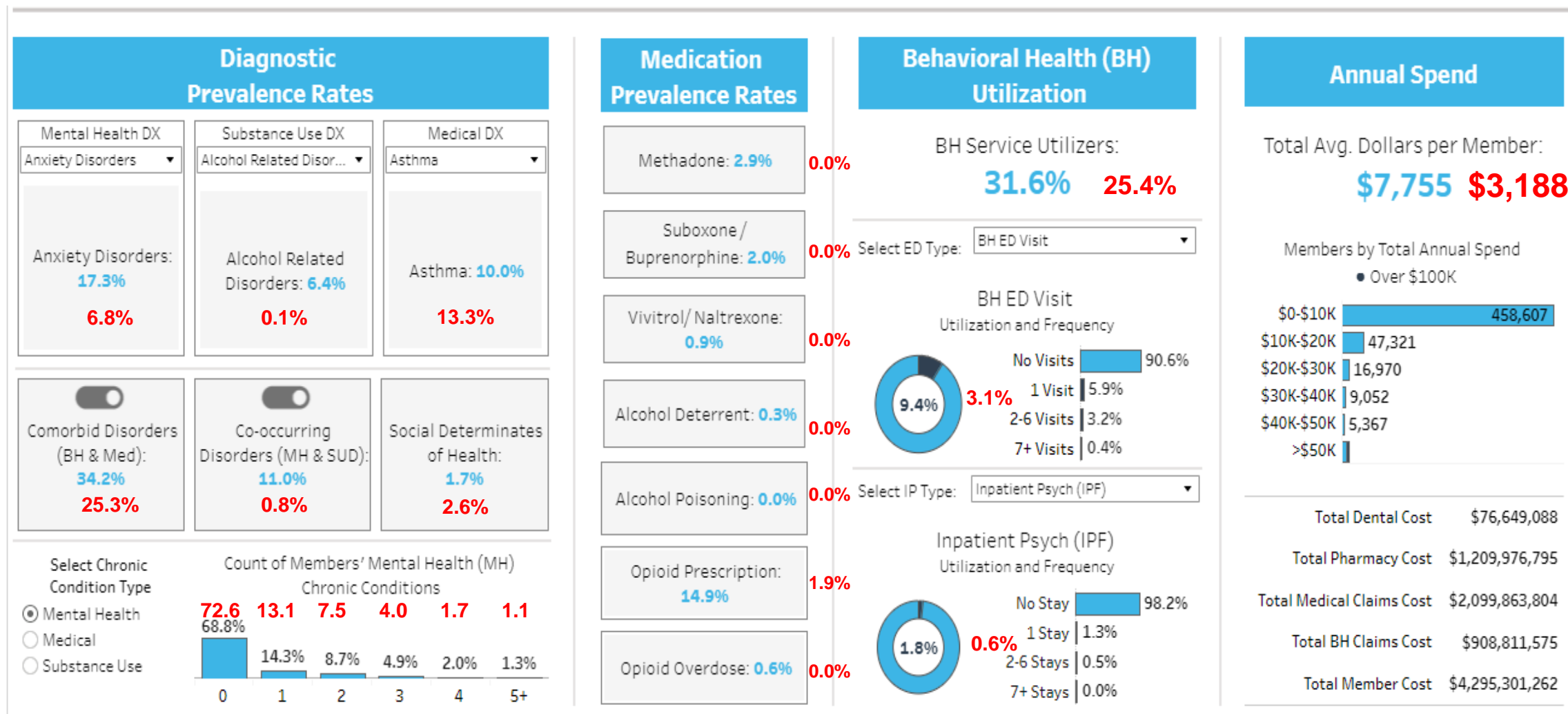
Enhancements to the Population Profile Currently in Progress

- updating the medical diagnostic categories including a COVID-19 indicator
- developing a telehealth indicator
- expanding upon BH Service Use indicator to include claims-based indicators for select levels of care
- integrating many of the SUPPORT grant variables into the dashboard to allow for an integrated dataset and alignment with SUD Projects and the 1115 SUD Waiver

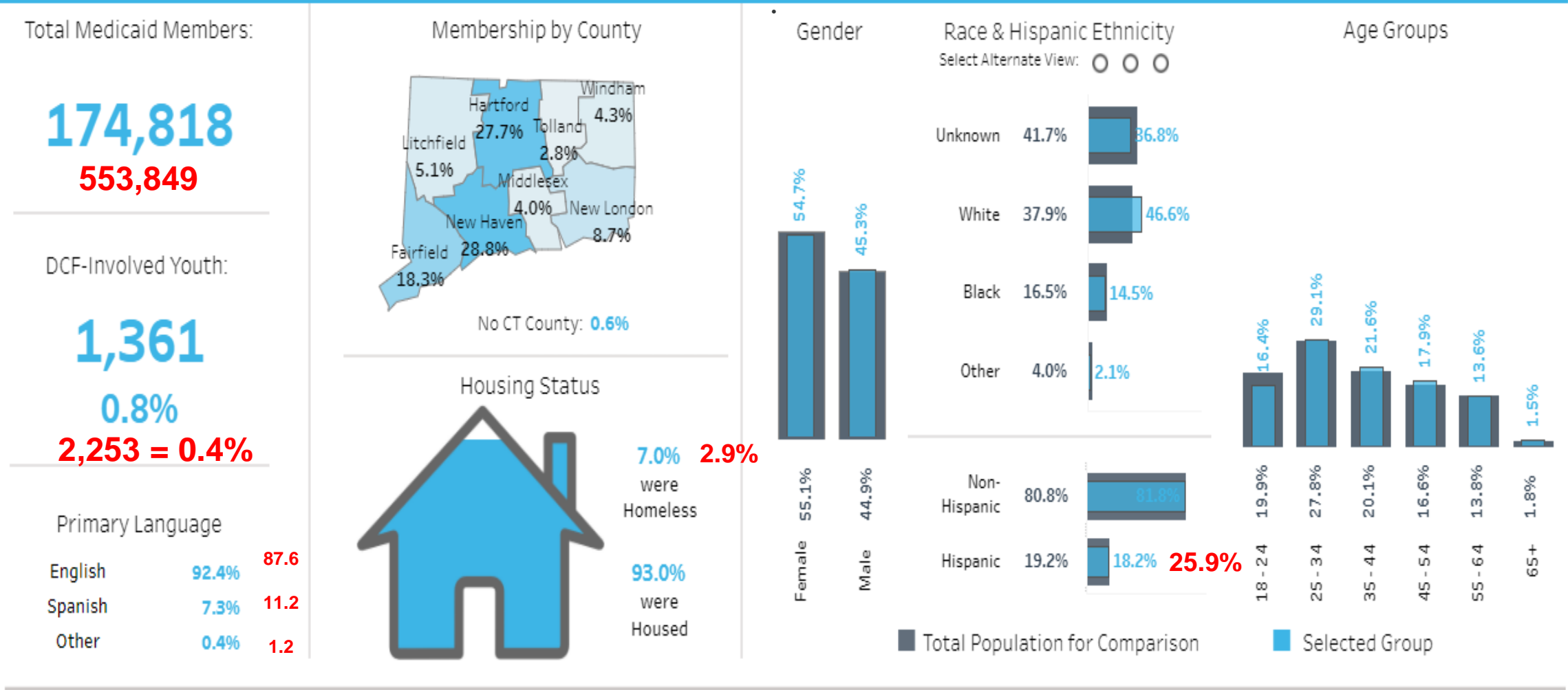
Adult Population (Compared to Youth Population)



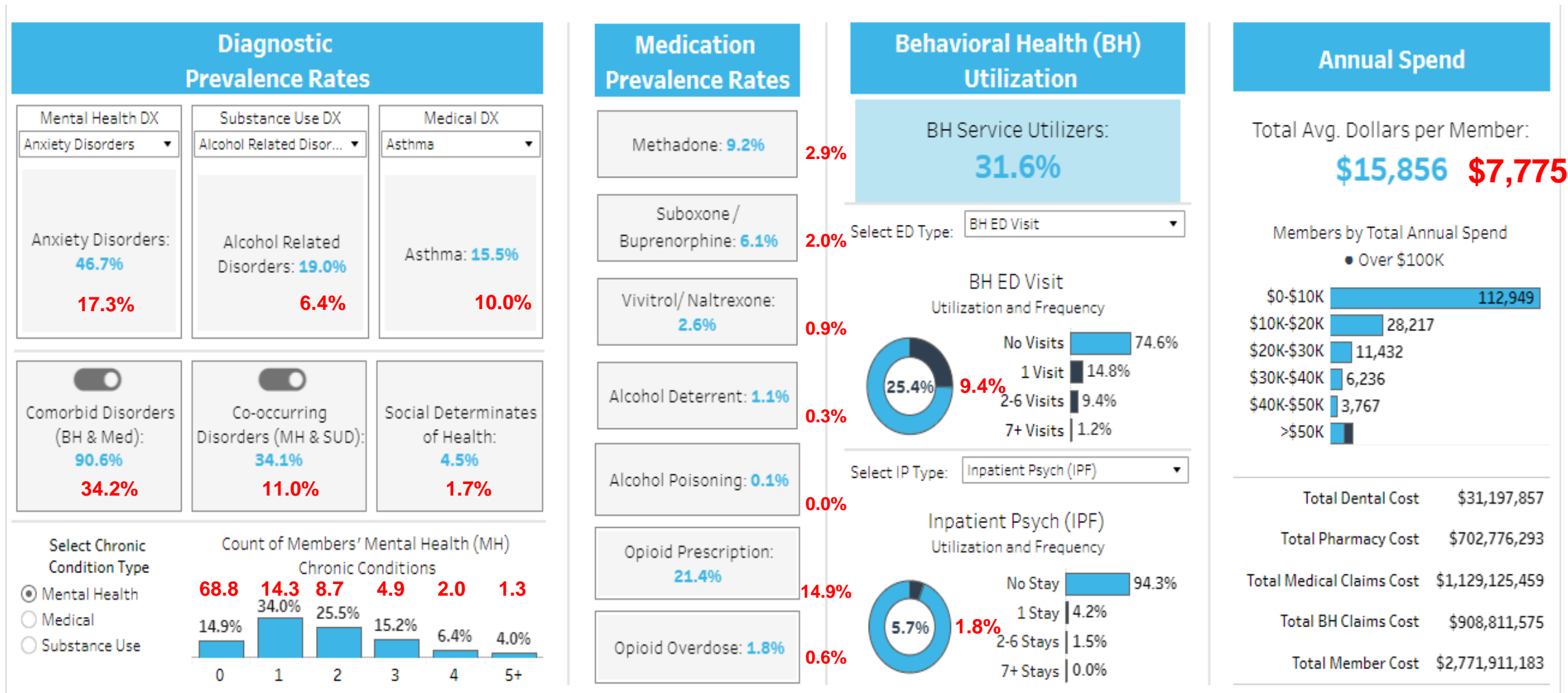
Adult Population (Compared to Youth Population)



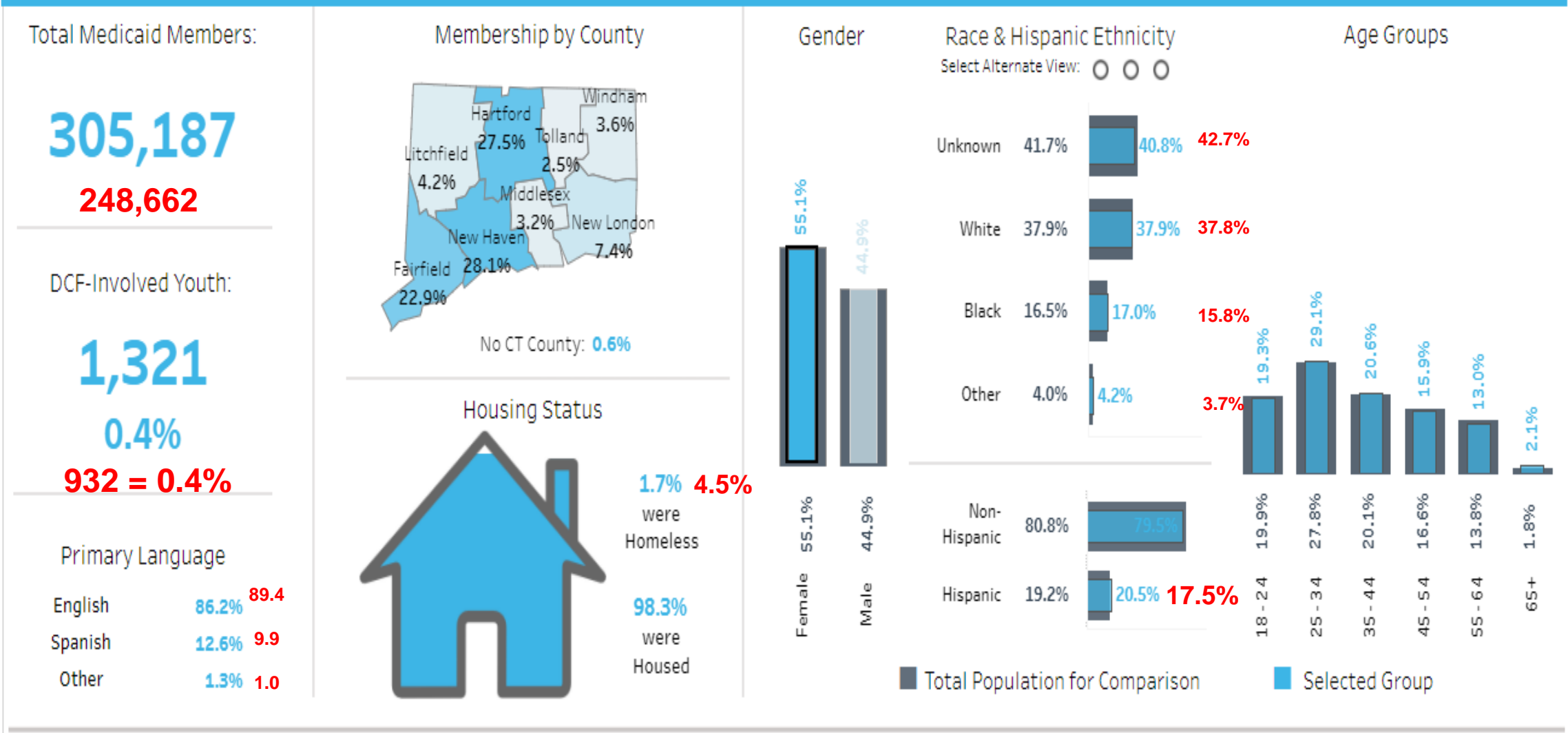
BH Service Utilizers (Compared to Adult Population)



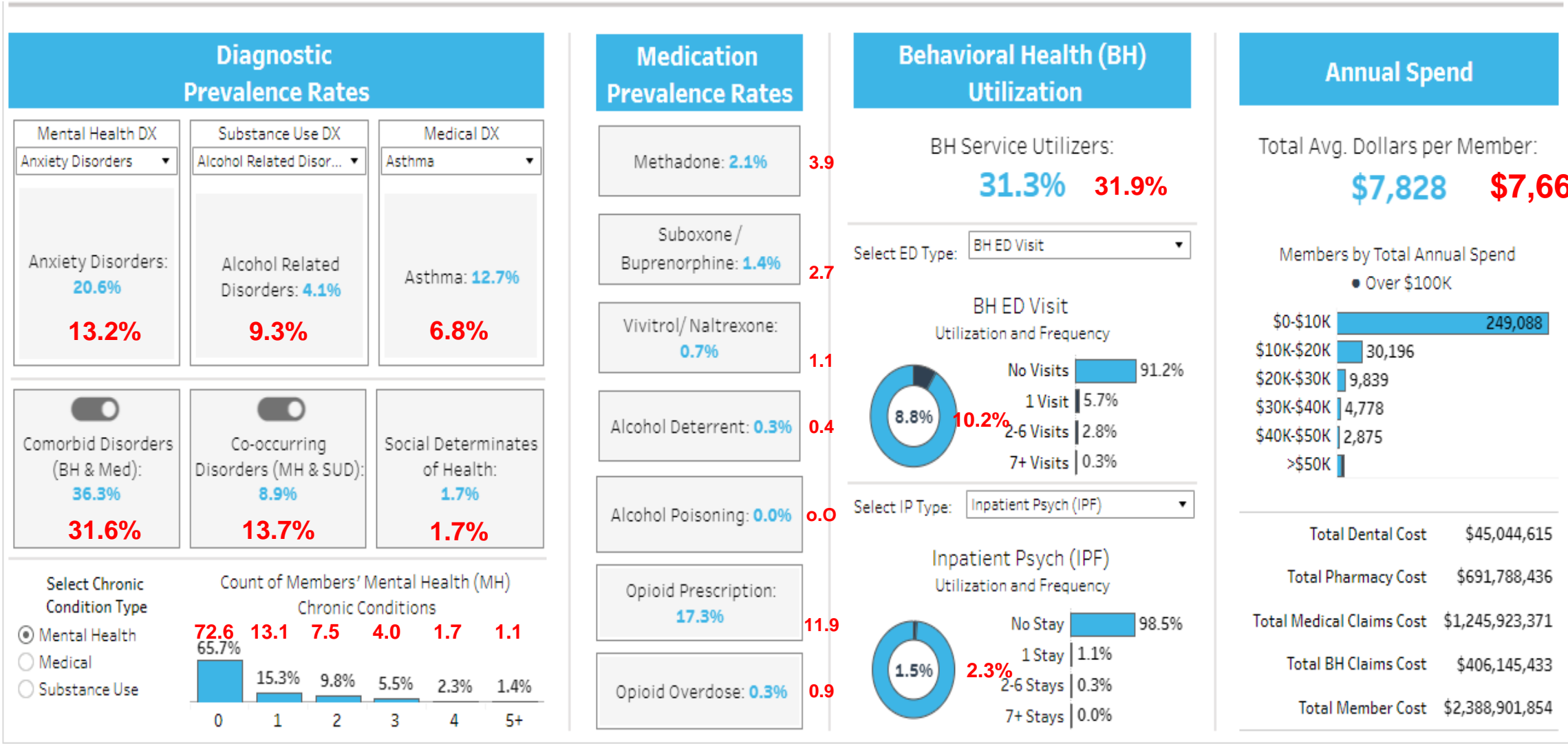
BH Service Utilizers (Compared to Adult Population)



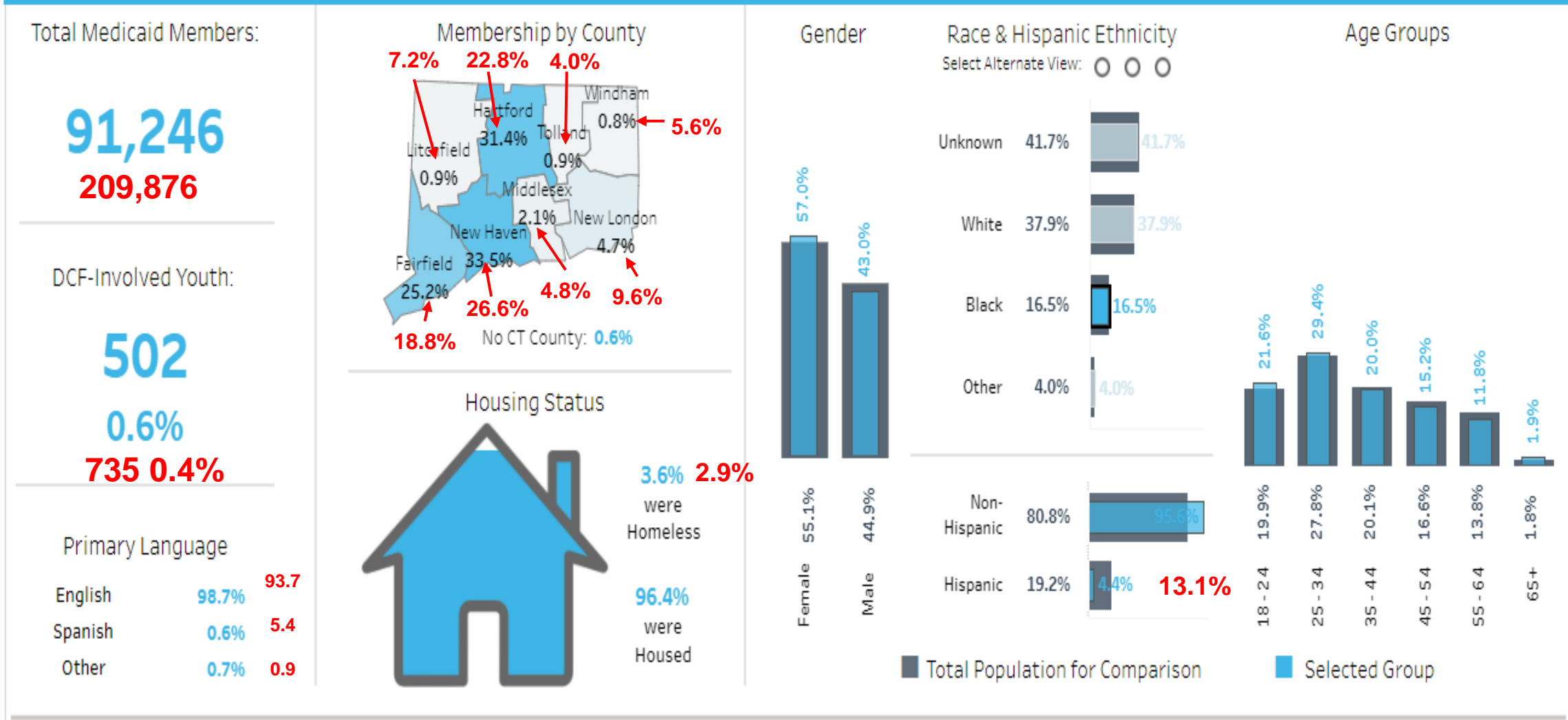
Adult Population By Gender – Female and Male



Adult Population By Gender – Female and Male



Adult Population By Race – Black and White



Gender

Gender	Percentage
Female	55.1%
Male	44.9%

Race & Hispanic Ethnicity

Select Alternate View: ☐ ☐ ☐

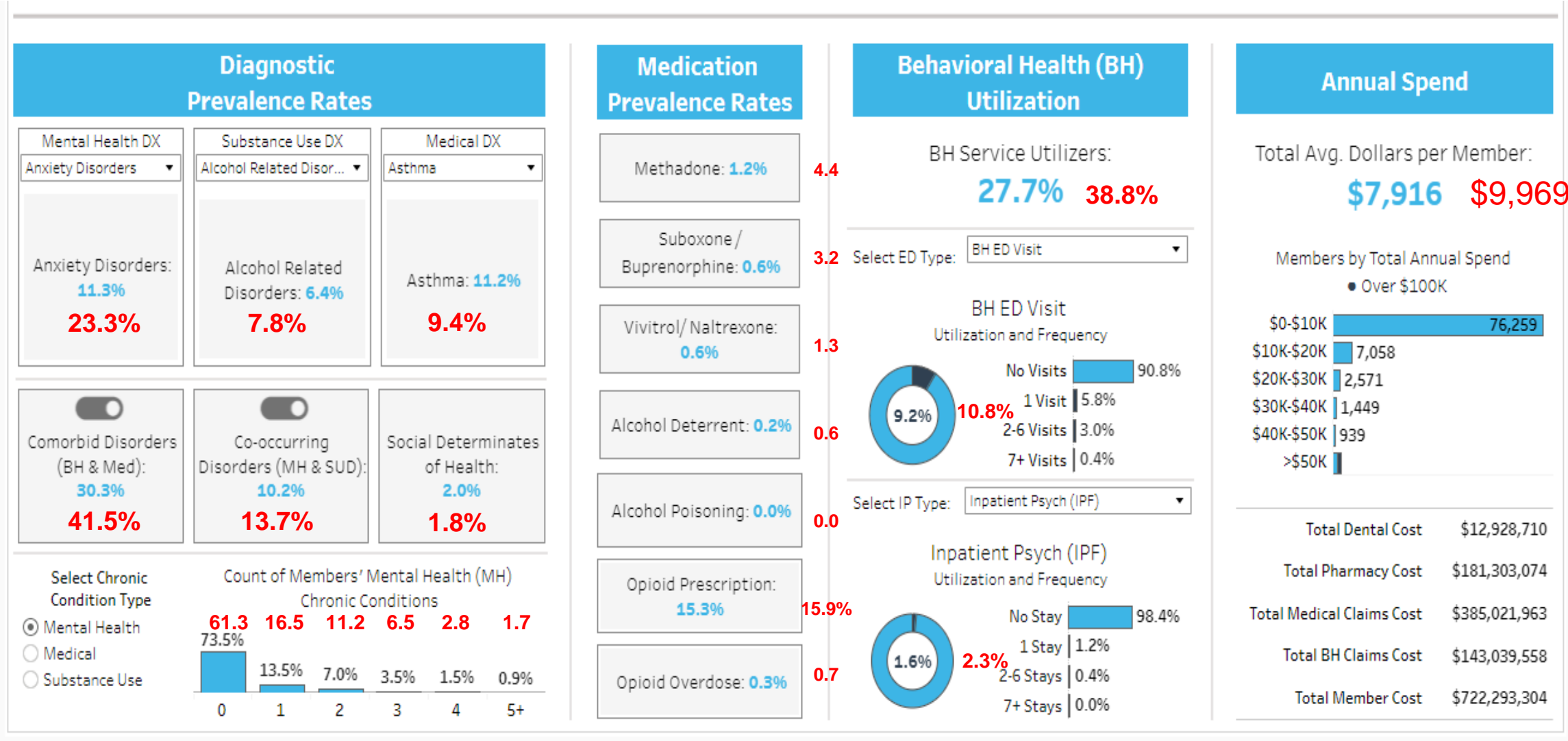
Race	Percentage
Unknown	41.7%
White	37.9%
Black	16.5%
Other	4.0%

Race	Percentage
Non-Hispanic	80.8%
Hispanic	19.2%

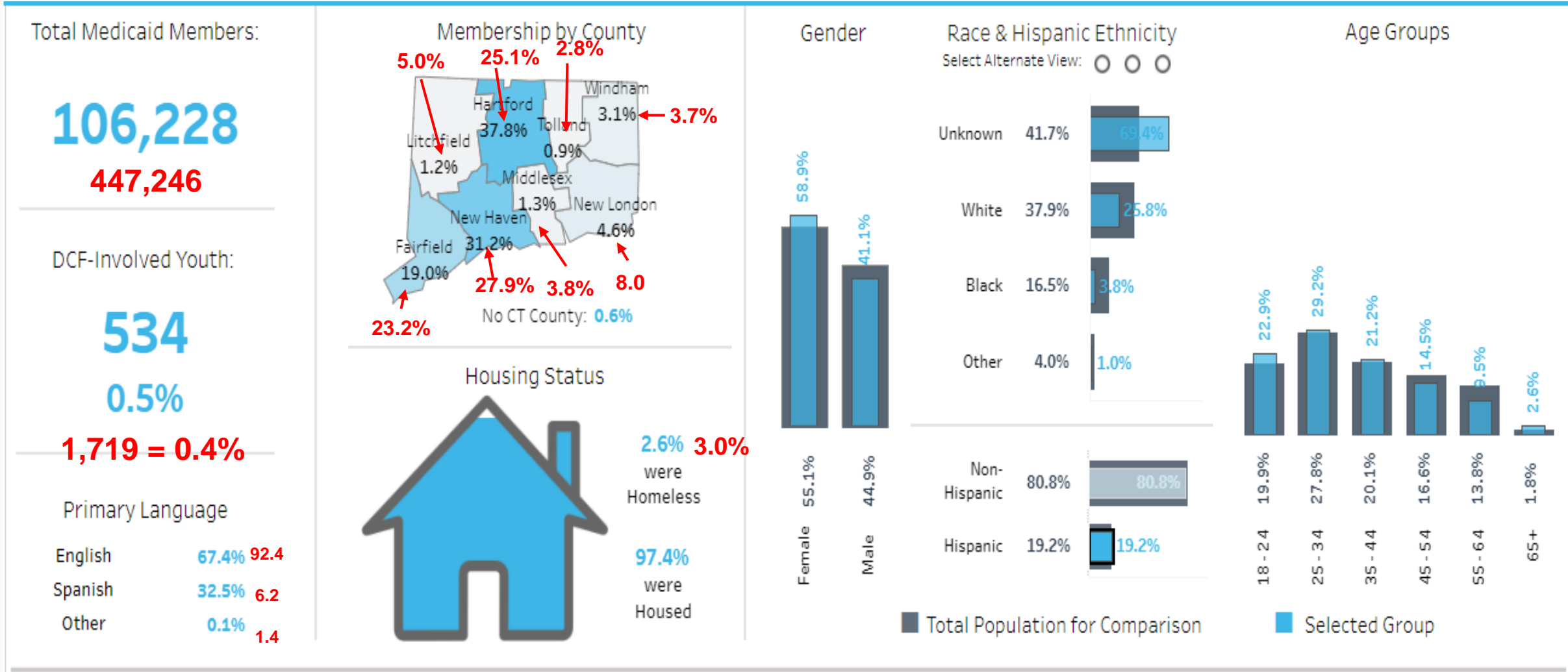
Age Groups

Age Group	Total Population for Comparison	Selected Group
18 - 24	19.9%	21.6%
25 - 34	27.8%	29.4%
35 - 44	20.1%	20.0%
45 - 54	16.6%	15.2%
55 - 64	13.8%	11.8%
65 +	1.8%	1.9%

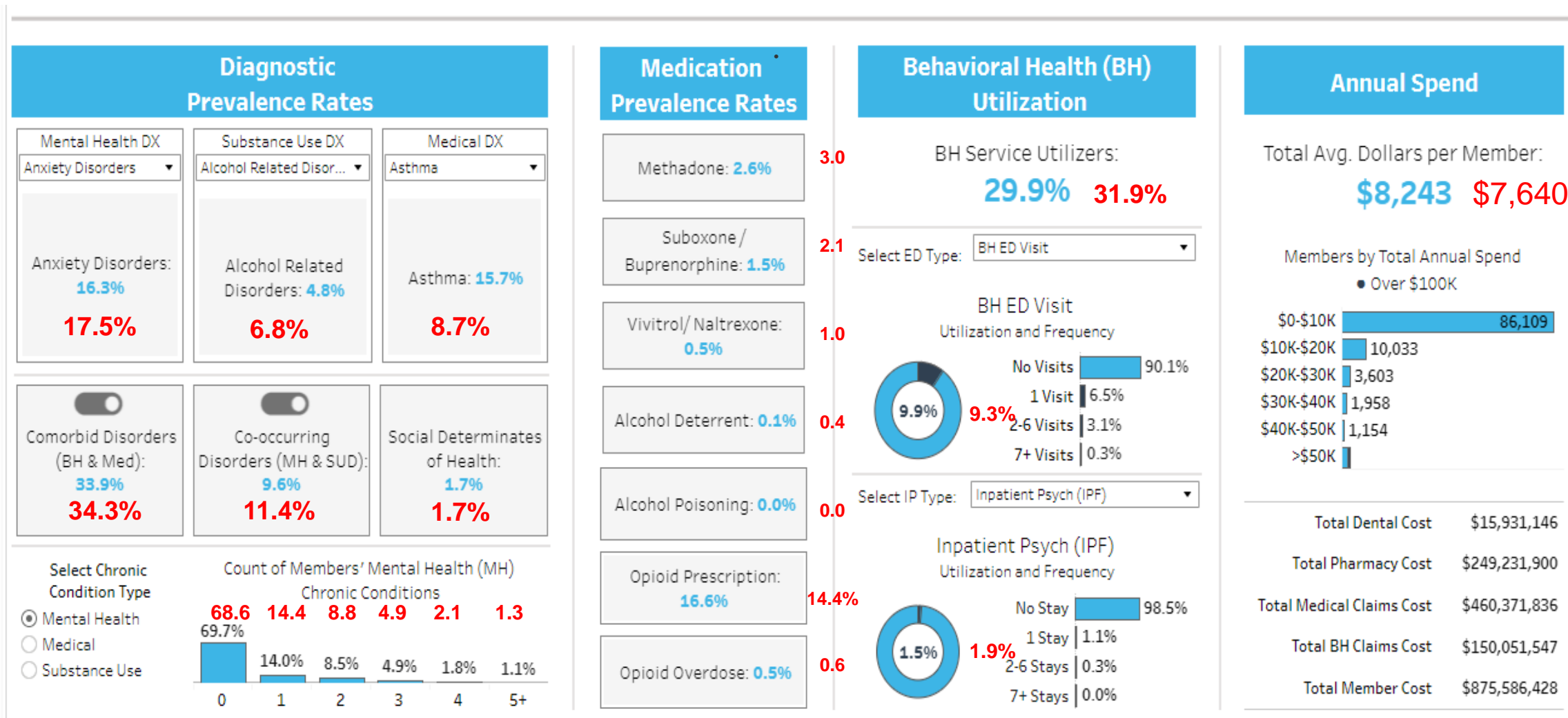
Adult Population By Race – Black and White



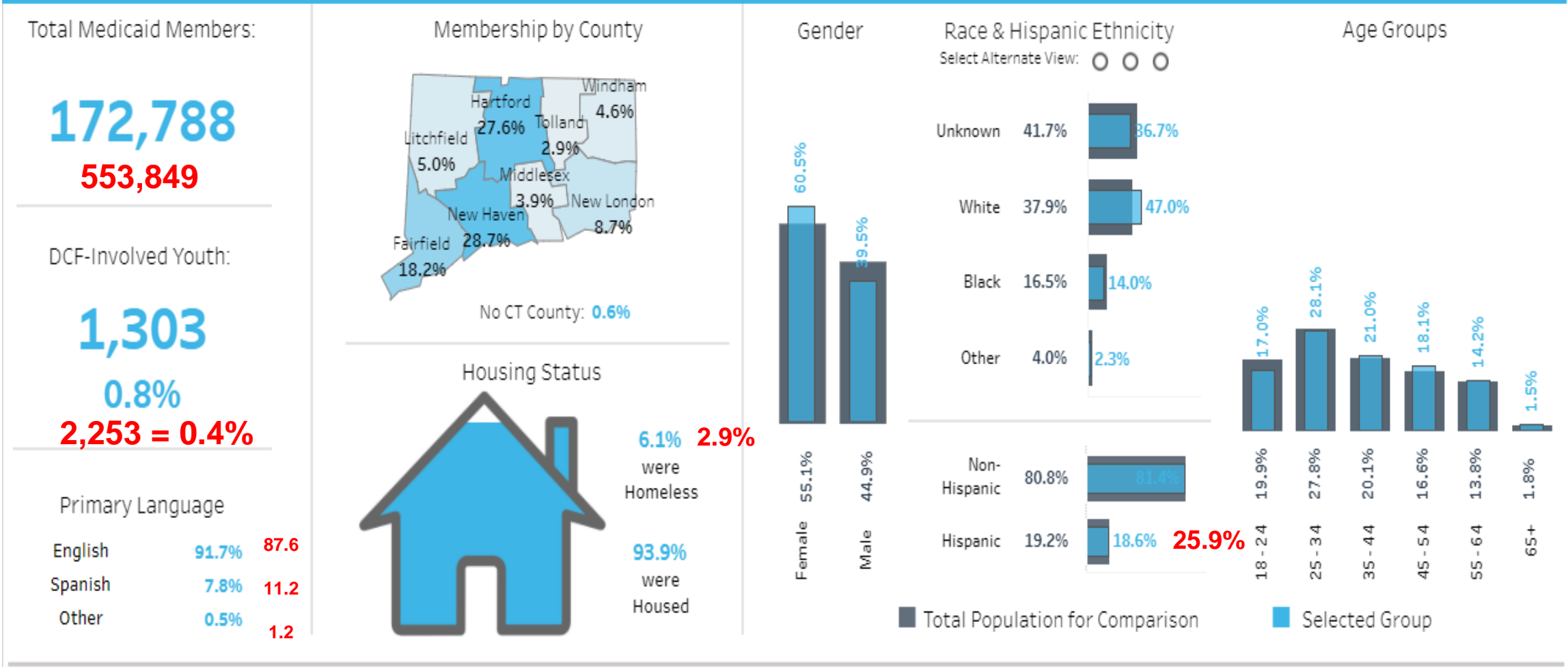
Adult Population By Ethnicity – Hispanic and Non-Hispanic



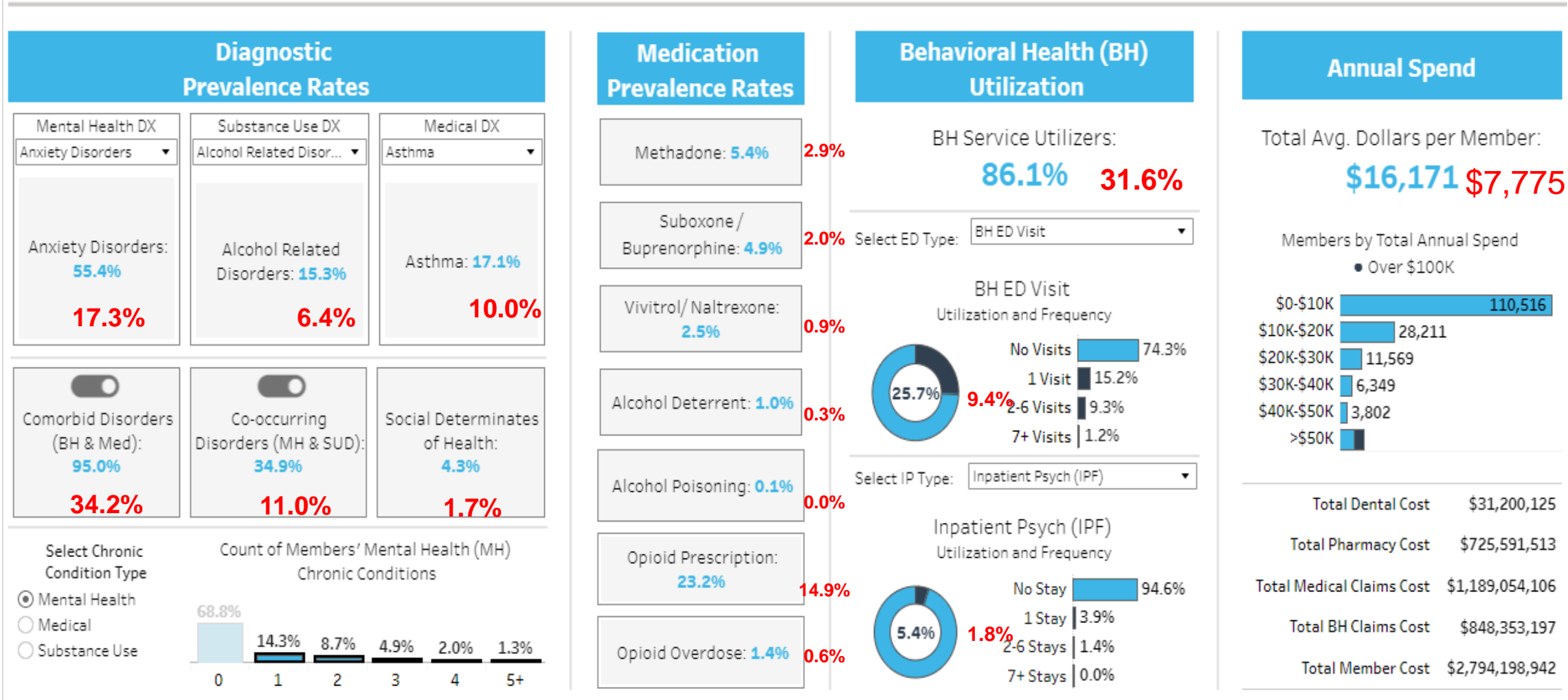
Adult Population By Ethnicity – Hispanic and Non-Hispanic



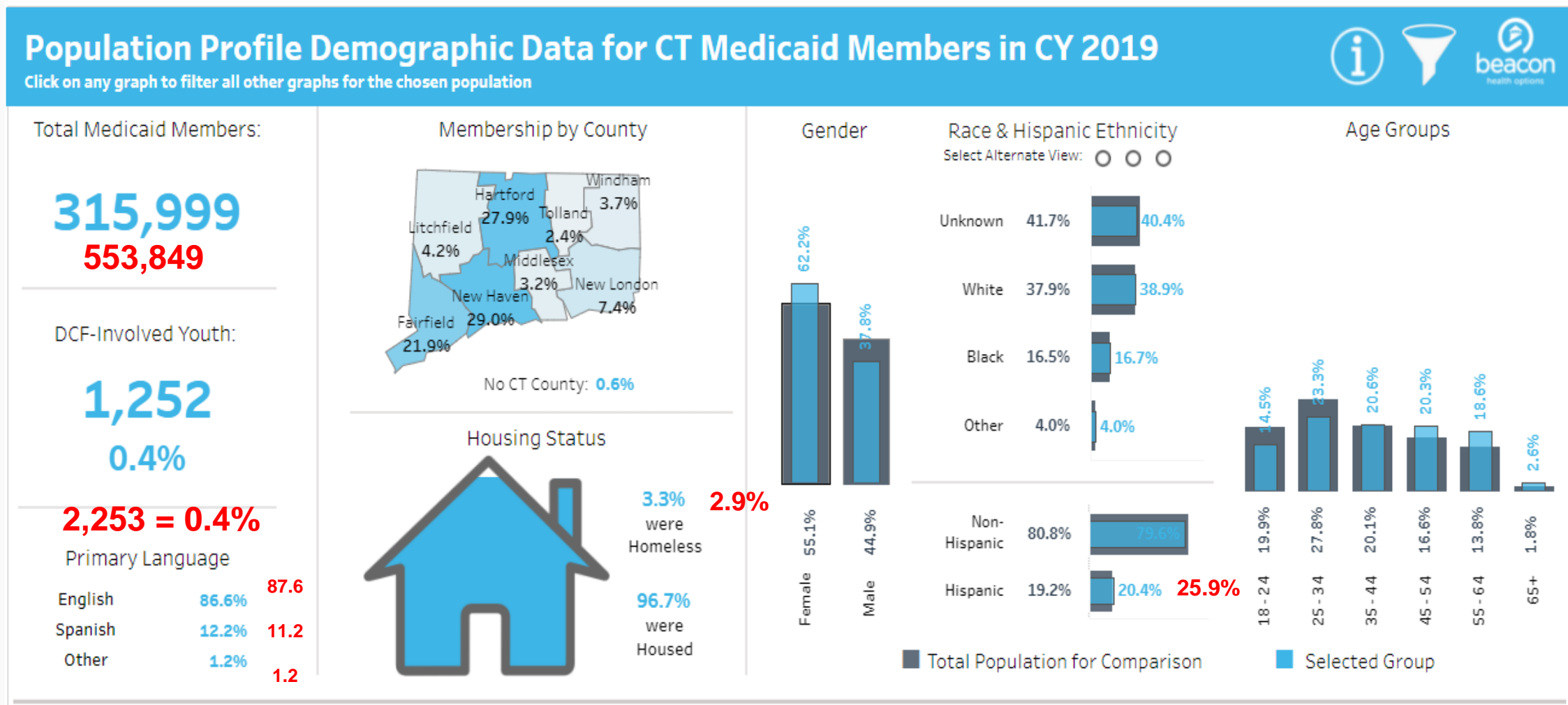
Adult Population 1+ Chronic MH Conditions (Adult Population)



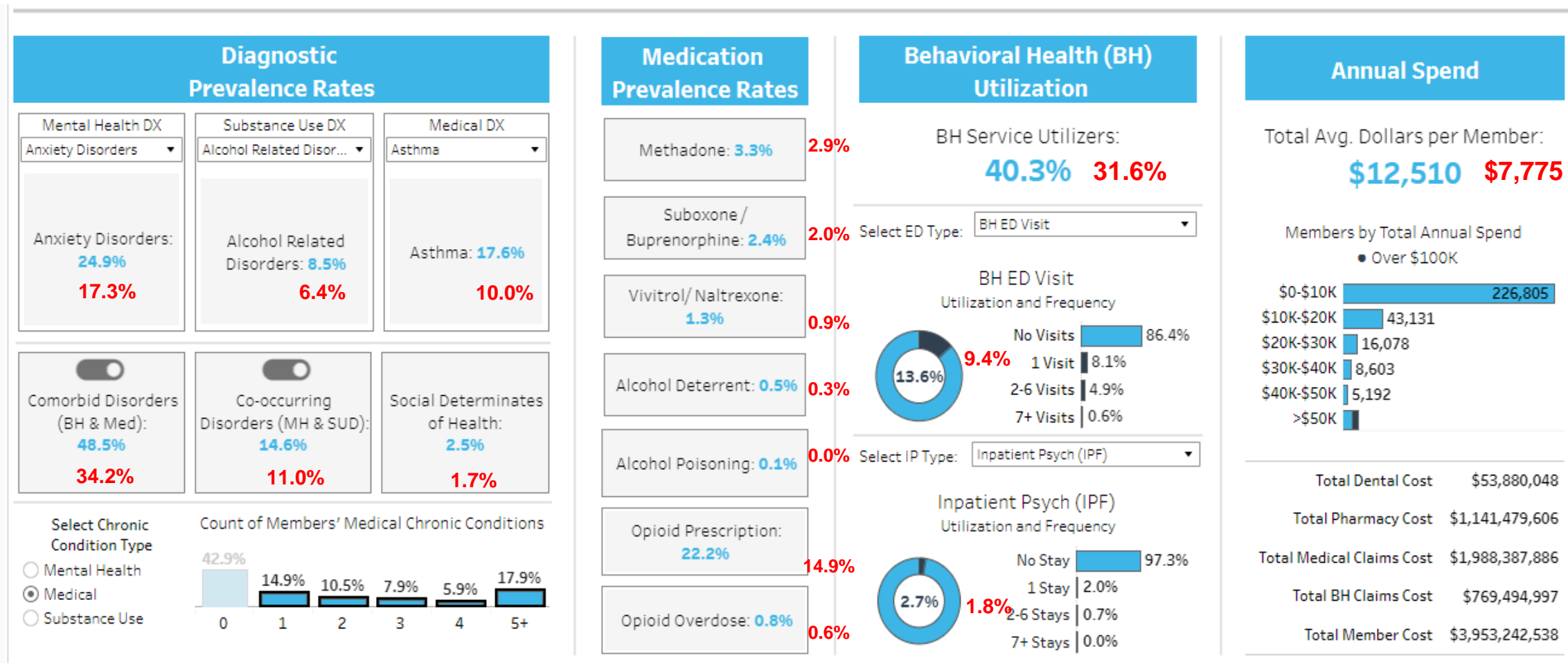
Adult Population With 1+ Chronic MH Conditions (Adult Population)



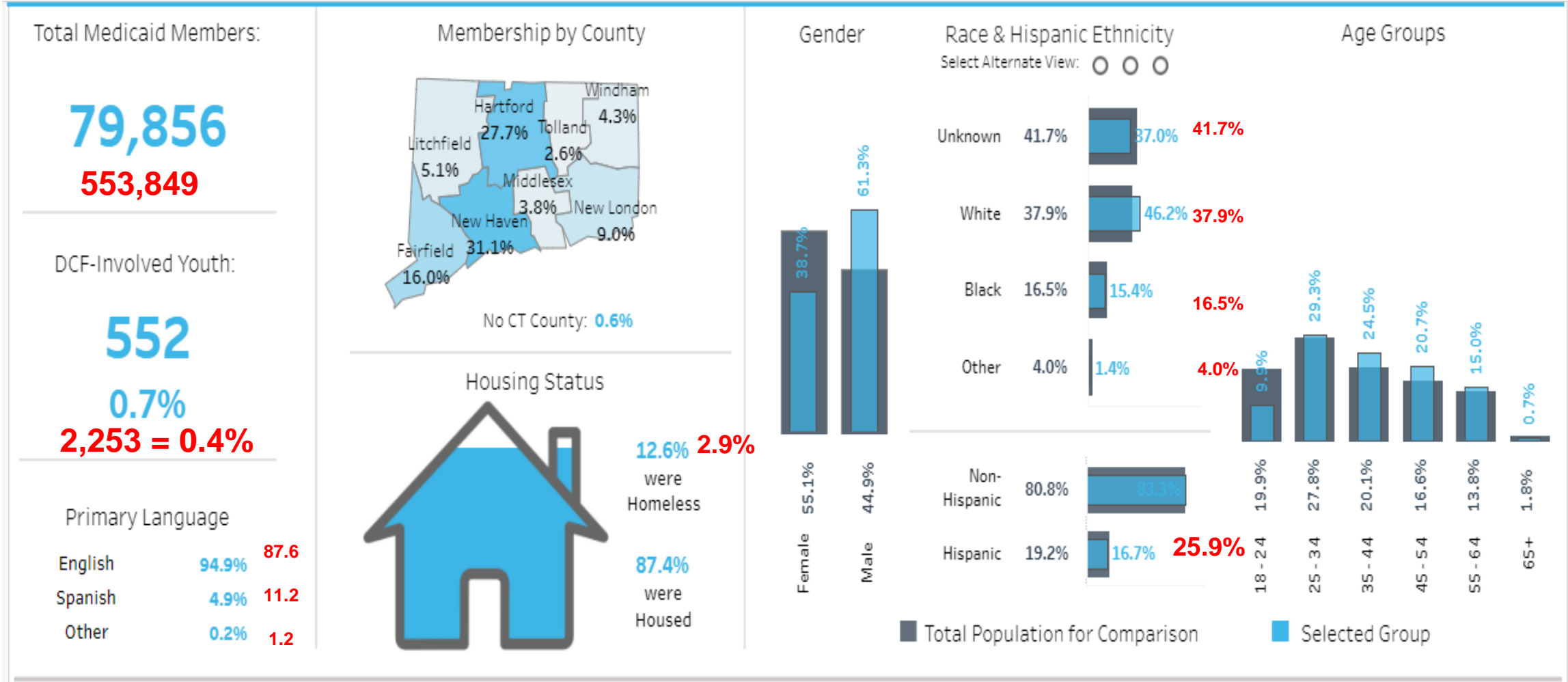
Adult Population With 1+ Chronic Medical Conditions (Adult Population)



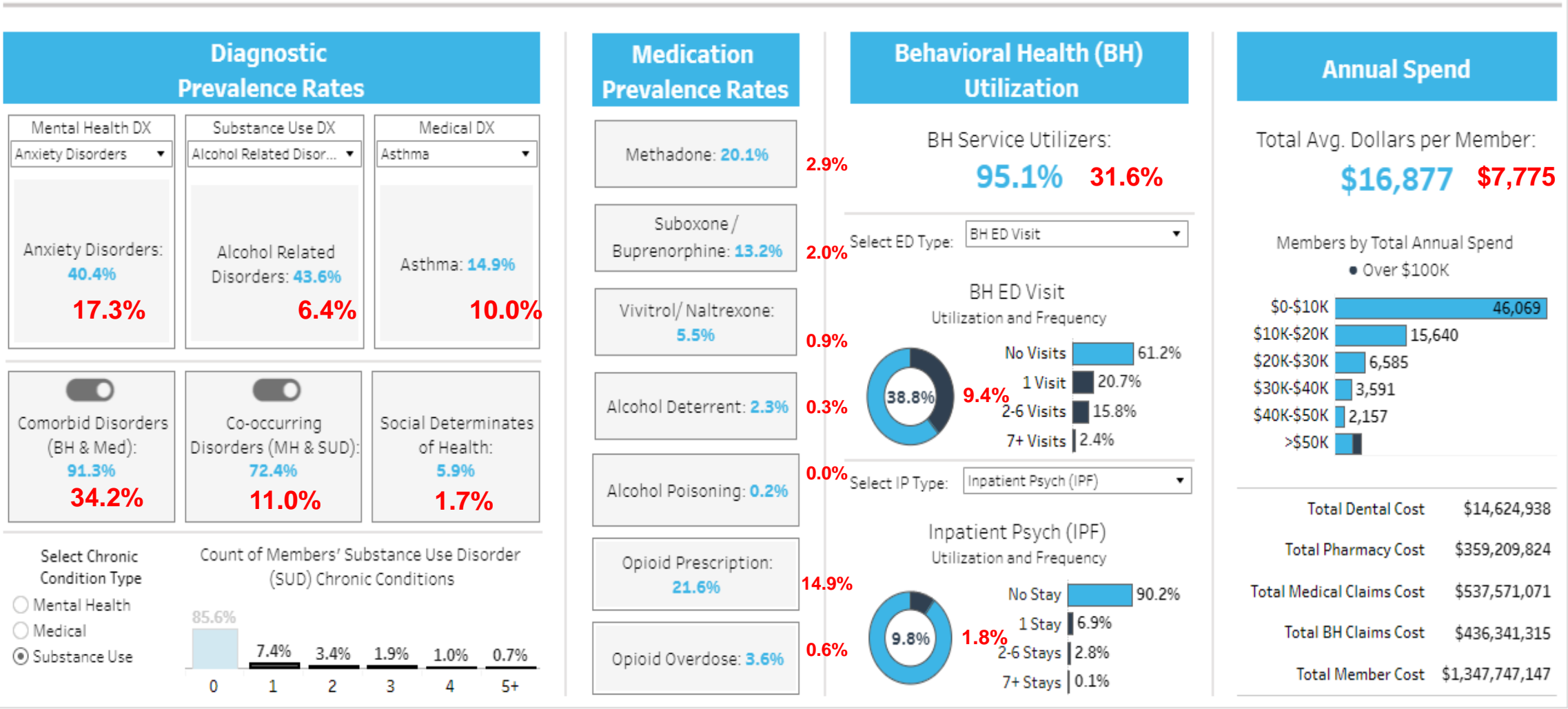
Adult Population With 1+ Chronic Medical Conditions (Adult Population)



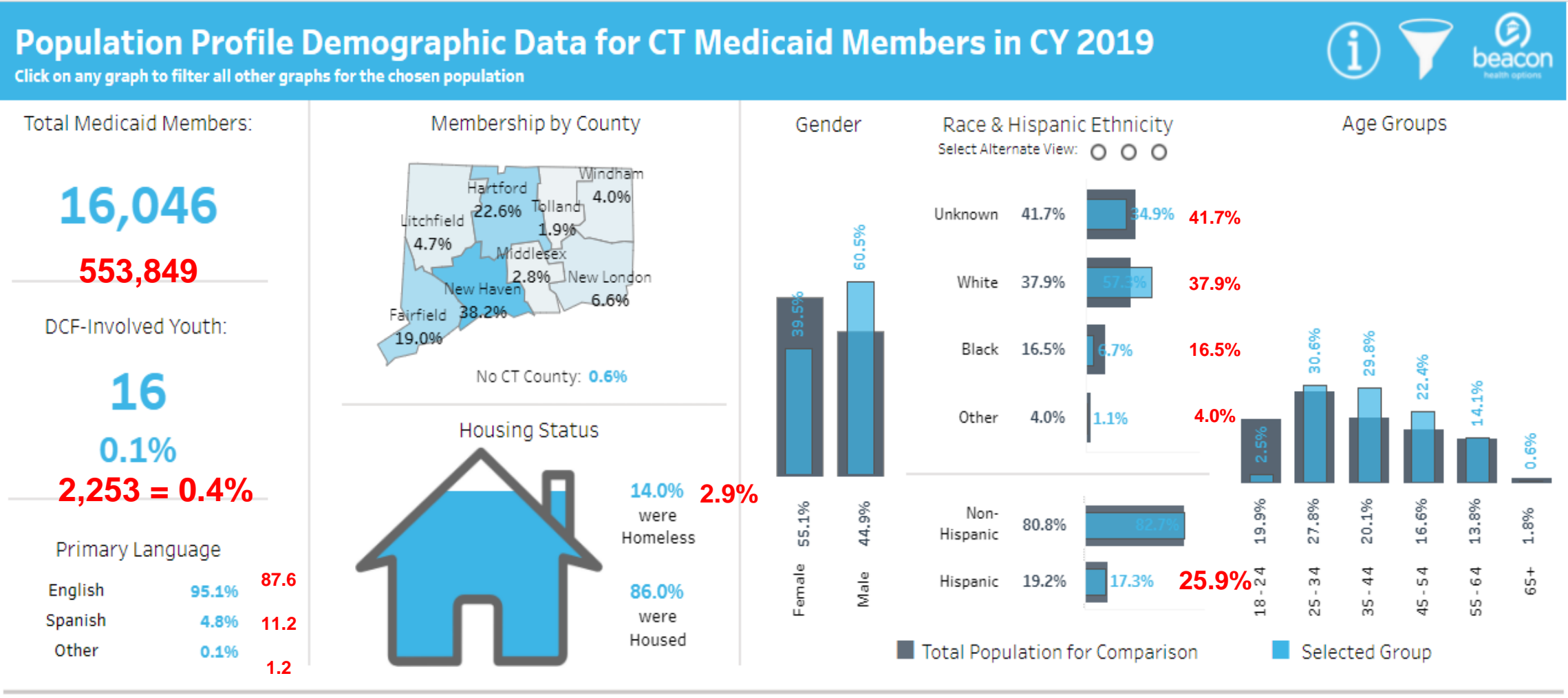
Adult Population With 1+ Chronic SUD Conditions (Adult Population)



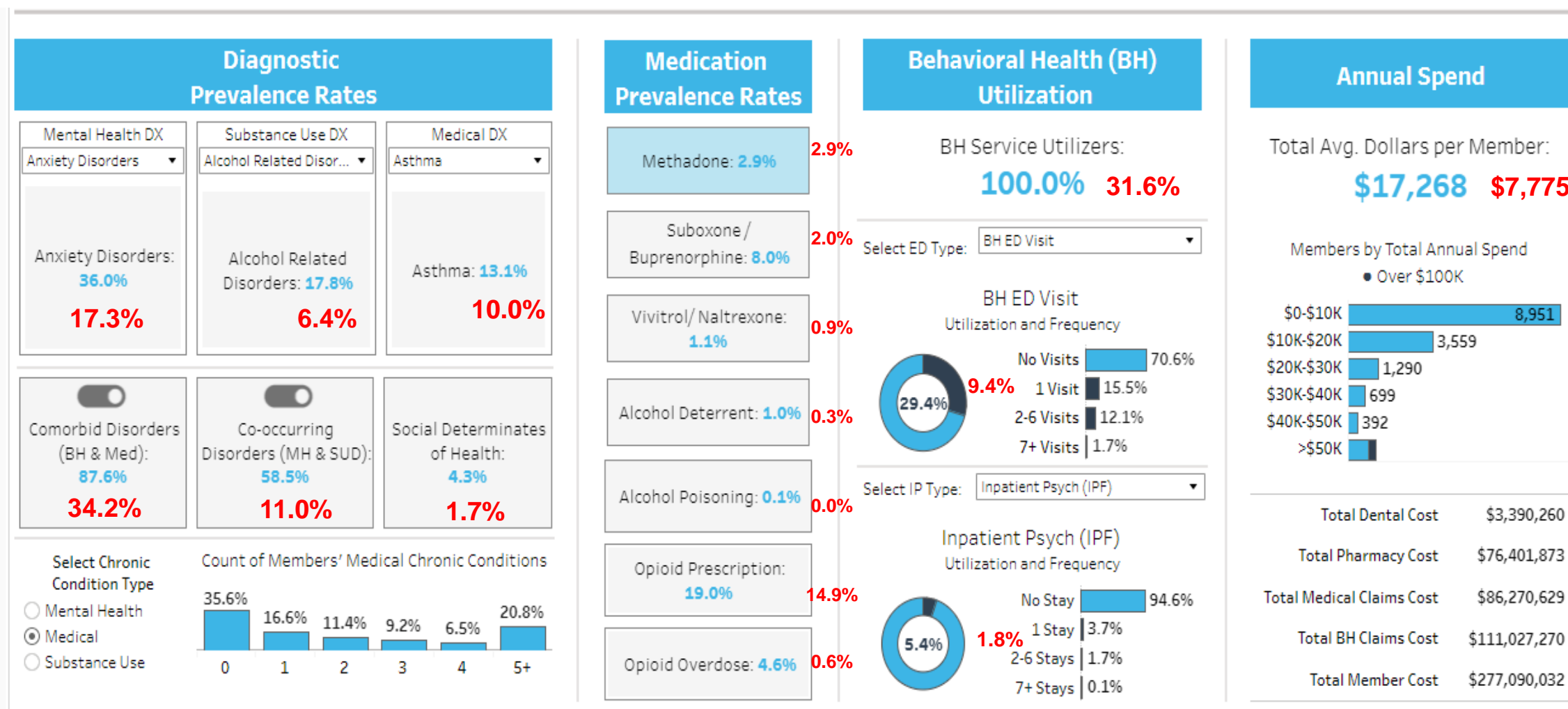
Adult Population With 1+ Chronic SUD Conditions (Adult Population)



Adult Methadone Population (Compared to Adult Population)



Adult Methadone Population (Compared to Adult Population)



1-2 Custom Drilldowns Using Live Dashboard (If time allows)

- Is there a question that has not been answered and that the data can speak to?
- Is there a particular sub-population across multiple filters (e.g. Hispanic Transition Age Youth with opioid addiction that reside in New Haven County)?